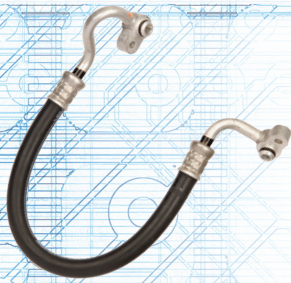


QUALITY ADVANTAGE HOSE ASSEMBLIES

O.E. FIT & FORM TECHNICIANS CHOICE



Hose assemblies play an important role in A/C system performance by carrying refrigerant and lubrication from one component to another. Poor manufacturing could lead to restricted refrigerant and oil flow to the compressor, resulting in catastrophic system failure. As a basic manufacturer, we engineer, develop and test in house to ensure a quality product.

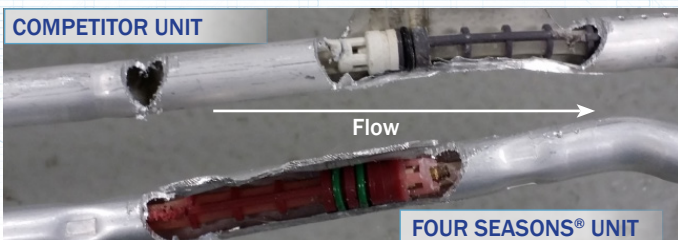
THE FOUR SEASONS® DIFFERENCE

Four Seasons® P/N 56176

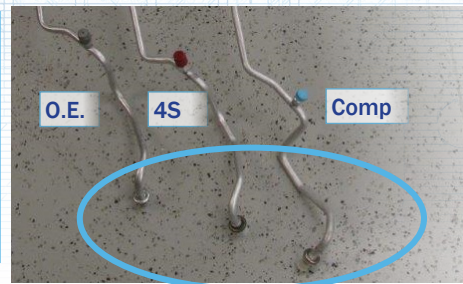


Competitor unit has wrong bend leading to the accumulator. This forces the installer to twist and manipulate the line in order to install on the vehicle, which may cause damage and stress to hose and crimps.

Four Seasons® P/N 56828



Competitor orifice tube installed backwards, preventing it from filtering debris properly.



Competitor design does not match the O.E. line design causing the installer to torque the fitting to the condenser, creating stress to the line.

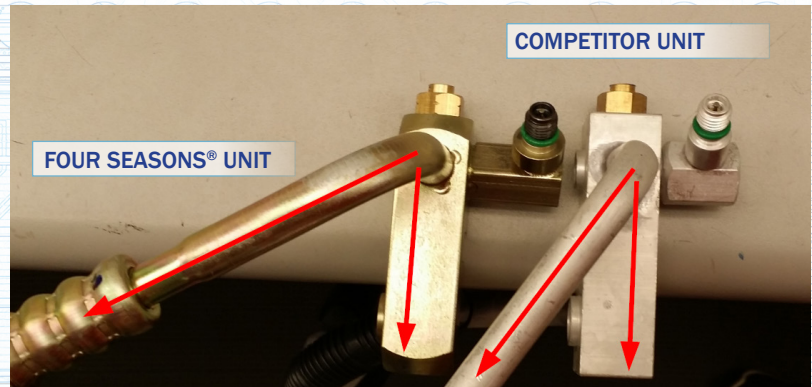
HOSE ASSEMBLIES QUALITY ADVANTAGE

THE FOUR SEASONS® DIFFERENCE *CONTINUED*

Four Seasons® P/N 56701

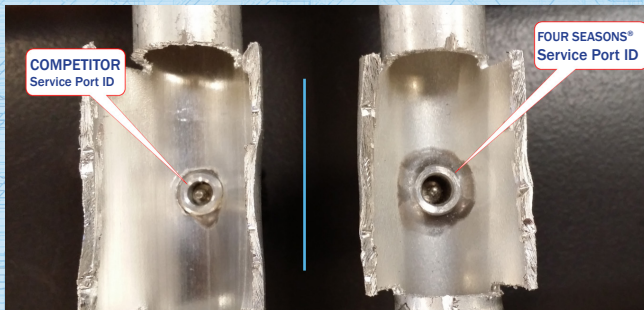


Competitor service port inner diameter is smaller than the Four Seasons® unit. This will increase the time it takes to charge the system and force the installer to use older style gauge fittings to do so.



Competitor incorrect angle from the manifold block will cause installer to manipulate line in order to install.

Four Seasons® P/N 56817



Competitor service port inner diameter is smaller than the Four Seasons® unit, increasing system charge time.

Four Seasons® P/N 55069



Competitors manifold inner diameter is smaller than the Four Seasons® and the O.E. unit, restricting oil and refrigerant flow.

FOUR SEASONS® P/N 56832

Competitor line has incorrect (larger) orifice tube. This effects the cooling of the evaporator and possibly cause it to flood.

