

A/C FILTER SCREEN KIT

PART NO. 39999

Four Seasons® TEMP Select™ brand A/C Filter Screen Kit offers highly popular in-line filters in a convenient, lightweight box. The individual compartments and graphic card with O.E part number reference, make it easy to find what you're looking for in a more timely and efficient manner.

| 4S P/N | Color | OE # | Short # | Location | Applications |
|--------|-----------------|-------------------|----------|-------------------------|--|
| 39335 | Purple | 25914263 | 15-33883 | Condenser Outlet | Front Unit 2011-09 Buick Enclave 2011-09 Chevrolet Traverse 2011-09 GMC Acadia 2010-09 Saturn Outlook |
| | Blue/ Purple | 15951308 | 15-10712 | Rear Expansion Valve | Rear Unit 2008 Buick Enclave 2008-07 GMC Acadia 2008-07 Saturn Outlook |
| 39336 | Black | 89022560 | 15-75209 | Condenser Outlet | 2011-07 Cadillac Escalade 2011-07 Chevrolet Suburban 2006-02 Chevrolet Trailblazer 2011-07 GMC Yukon XL 2006-02 GMC Envoy 2006-03 Isuzu Ascender |
| 39337 | Black | 25687579 | 15-8947 | Condenser Outlet | 2003-01 Olds Aurora |
| 39338 | Blue | 10356437 | 15-75159 | Condenser Outlet | 2009-06 Buick Allure 2009-06 Buick Lacrosse 2011-06 Chevrolet Impala 2008-05 Pontiac Grand Prix |
| 39339 | Green | 21999762 | 15-33197 | Condenser Outlet | 2011-06 Buick Lucerne 2011-06 Cadillac DTS |
| 39340 | Black | 88377-04010 | 15-75210 | Expansion Valve | 2009-08 Toyota Camry 2009-05 Toyota Tacoma |
| | Black | 52494593 | 15-75210 | Condenser Outlet | 2011-09 Cadillac Escalade 2009-04 Cadillac XLR 2010-05 Chevrolet Cobalt 2011-05 Chevrolet Corvette 2011-06 Chevrolet HHR 2011-04 Chevrolet Malibu 2009-08 Chevrolet Silverado 2009-08 GMC Sierra 2009-08 GMC Yukon |
| 39341 | Black | 1L2Z- 19E771AA | YF-2706 | Rear Expansion Valve | 2009-05 Ford Escape 2005-02 Ford Explorer 2005-03 Lincoln Aviator 2009-08 Mazda Tribute 2009-05 Mercury Mariner 2005-02 Mountaineer |

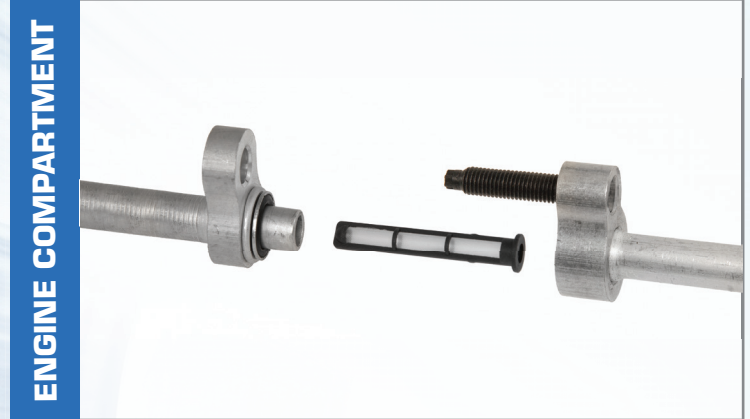
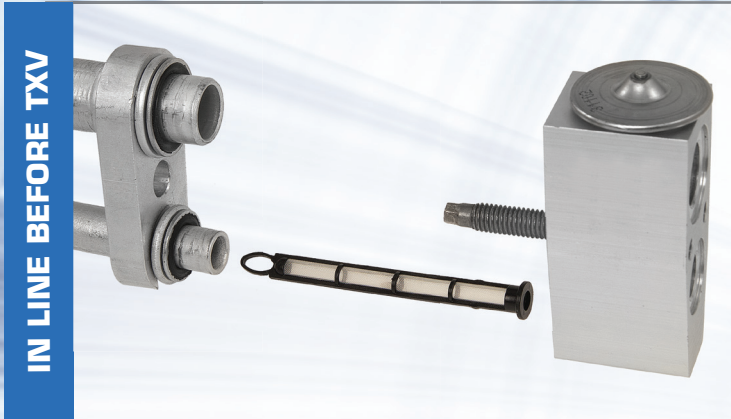
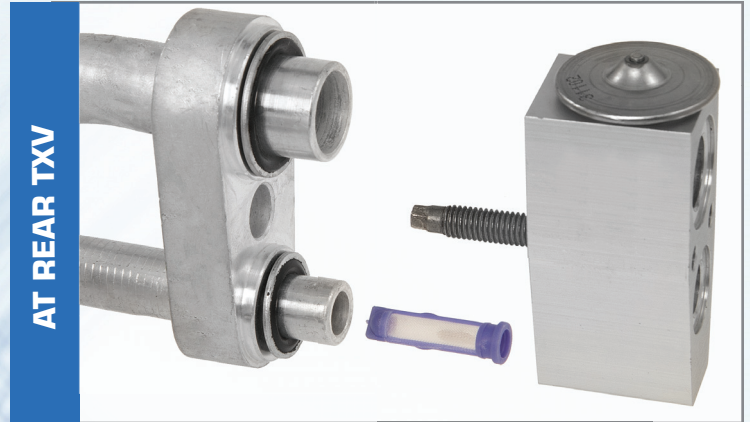


DID YOU KNOW?

Many of today's A/C systems employ an In-Line Filter Screen before the Expansion Valve in order to trap debris and dissipate refrigerant oil. These Filters should be inspected and/or replaced as part of any A/C system repair, but especially crucial when there has been a catastrophic compressor failure.

LIQUID LINE FILTER

LOCATION



PLUGGED LIQUID LINE?

DIAGNOSIS DEPENDS ON LOCATION

Before or After Service Port

| PRESSURE | LOCATION |
|---|---|
| Low High Side Gauge Pressure Very Low/Vacuum Low Side Gauge Pressure | At Condenser Outlet or Engine Compartment |
| Pressure Normal, Front Cooling, Rear No Cooling | At Rear TXV |
| Low High Side Gauge Pressure Very Low/Vacuum Low Side Gauge Pressure | At Rear TXV |