

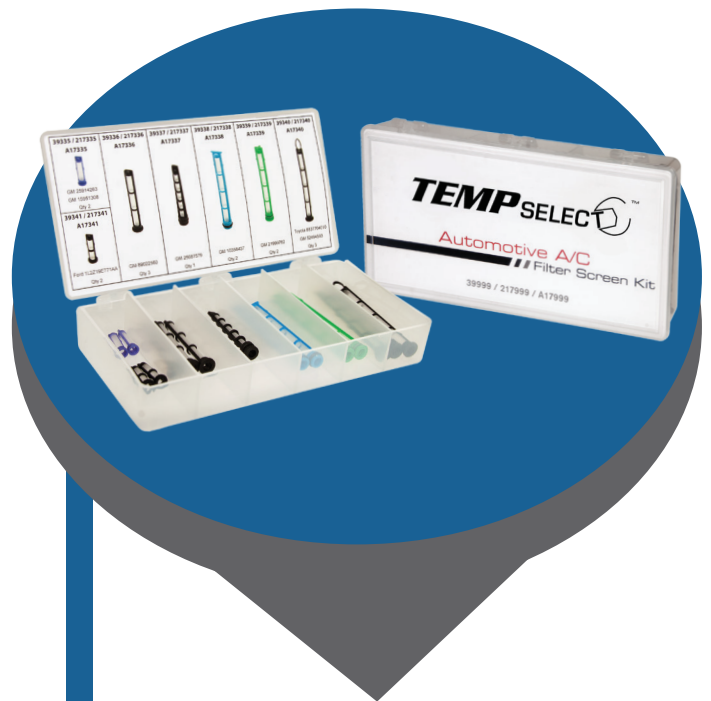


A/C FILTER SCREEN KIT

PART NO. 39999

Four Seasons® TEMP Select™ brand A/C Filter Screen Kit offers highly popular in-line filters in a convenient, lightweight box. The individual compartments and graphic card with O.E part number reference, make it easy to find what you're looking for in a more timely and efficient manner.

4S P/N	Color	O.E. #	Short #	Location	Applications
39335	Purple	25914263	15-33883	Rear Expansion Valve	Rear Unit 2016-09 Buick Enclave 2016-09 Chevrolet Traverse 2015-09 GMC Acadia 2010-09 Saturn Outlook
	Blue/ Purple	15951308	15-10712	Rear Expansion Valve	Rear Unit 2008 Buick Enclave 2008-07 GMC Acadia 2008-07 Saturn Outlook
39336	Black	89022560	15-75209	Rear Expansion Valve	Rear Unit 2016-07 Cadillac Escalade 2016-07 Chevrolet Suburban 2006-02 Chevrolet Trailblazer 2016-07 GMC Yukon XL 2006-02 GMC Envoy 2006-03 Isuzu Ascender
39337	Black	25687579	15-8947	Condenser Outlet	2003-01 Olds Aurora
39338	Blue	10356437	15-75159	Condenser Outlet	2009-06 Buick Allure 2009-06 Buick Lacrosse 2016-06 Chevrolet Impala 2006-07 Monte Carlo 2008-05 Pontiac Grand Prix
39339	Green	21999762	15-33197	Condenser Outlet	2011-06 Buick Lucerne 2011-06 Cadillac DTS
39340	Black	88377-04010	15-75210	Expansion Valve	2009-05 Toyota Tacoma
	Black	52494593		Condenser Outlet	2014-07 Cadillac Escalade 2009-04 Cadillac XLR 2010-05 Chevrolet Cobalt 2013-05 Chevrolet Corvette 2011-06 Chevrolet HHR 2012-04 Chevrolet Malibu 2010-07 Pontiac G5 2010-05 Pontiac G6 2009-07 Saturn Aura 2007-03 Saturn Ion 2009-08 Chevrolet Silverado 2014-07 Chevrolet Suburban 2014-07 Chevrolet Tahoe 2009-08 GMC Sierra 2014-07 GMC Yukon
39341	Black	1L2Z-19E771AA	YF-2706	Rear Expansion Valve	2009-05 Ford Escape 2005-02 Ford Explorer 2005-03 Lincoln Aviator 2009-08 Mazda Tribute 2009-05 Mercury Mariner 2005-02 Mountaineer



DID YOU KNOW?

Many of today's A/C systems employ an in-line filter screen before the expansion valve in order to trap debris and dissipate refrigerant oil. These filters should be inspected and/or replaced as part of any A/C system repair, but especially crucial when there has been a catastrophic compressor failure.

www.4s.com • 1801 Waters Ridge Drive • Lewisville • TX • 75057 • Form # FS95805-17

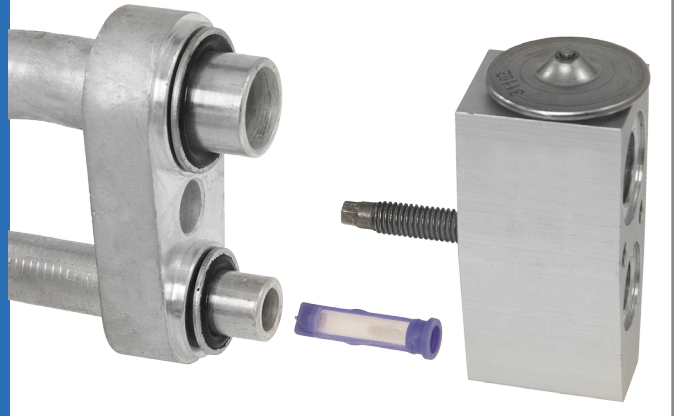
LIQUID LINE FILTER

LOCATION

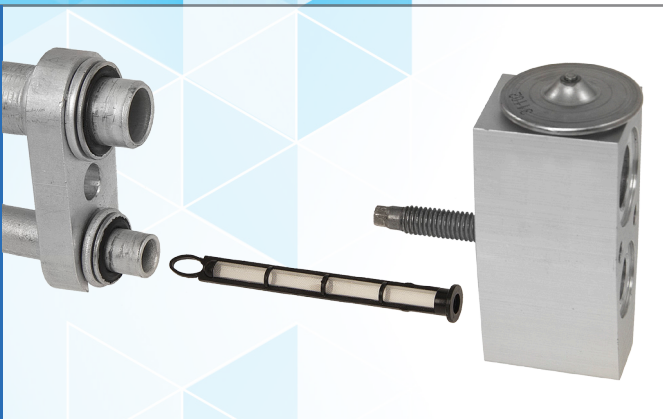
CONDENSER OUTLET



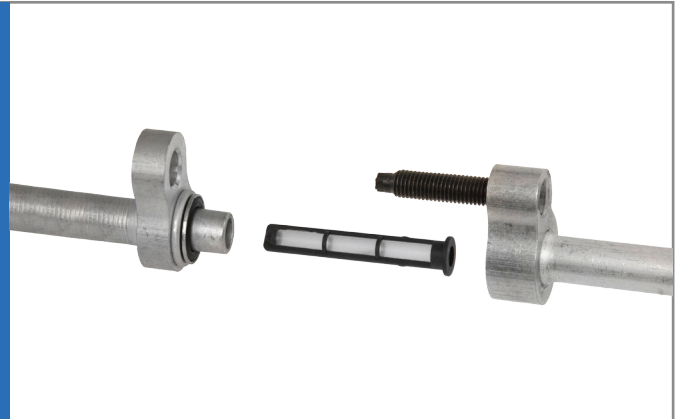
AT REAR TXV



IN LINE BEFORE TXV



ENGINE COMPARTMENT



PLUGGED LIQUID LINE? DIAGNOSIS DEPENDS ON LOCATION

Before or After Service Port

PRESSURE	LOCATION
Low High Side Gauge Pressure Very Low/Vacuum Low Side Gauge Pressure	At Condenser Outlet or Engine Compartment
Pressure Normal, Front Cooling, Rear No Cooling	At Rear TXV
Low High Side Gauge Pressure Very Low/Vacuum Low Side Gauge Pressure	At Rear TXV